



IBF/PwC Mortgage Market Profile New Lending – Quarterly Report

	Number	Value
New Mortgage Lending Quarter 4, 2006:	48,637	€10,343m
Total, 2006 (Q1-Q4, 2006)	203,953	€39,872m
Quarter 3, 2006	54,623	€10,962m
Quarter 2, 2006	53,449	€10,130m
Quarter 1, 2006	47,244	€8,437m
Quarter 4, 2005	55,618	€10,341m
% change, Q4 2006 Vs. Q3 2006	-11.0%	-5.6%
% change, Q4 2006 Vs. Q4 2005	-12.6%	0.0%

The total value of mortgage loans issued in 2006 was €39,872m, with €10,343m of new lending in the final quarter of 2006 (for detailed analysis see page 3).

At €39,872m, the total value of lending in 2006 was up 16.9% on the total for 2005.

The total value of lending in the final quarter of 2006 was comparable to the value of lending in the same period in 2005 (for detailed analysis see page 3).

Market size:

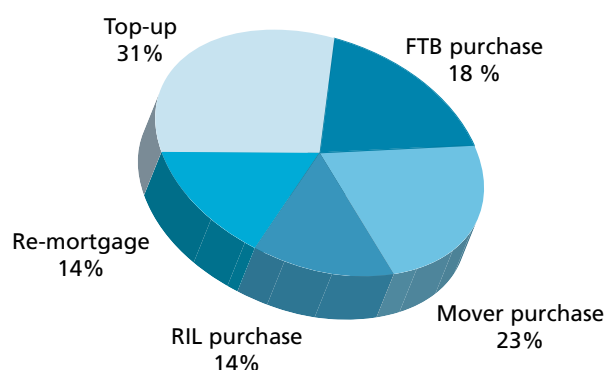
- These figures relate to all lending secured by residential property (for further details regarding the basis for this data, see page 4).
- The total of outstanding residential mortgage debt is published on a monthly basis by the Central Bank and Financial Services Authority of Ireland.

Loan Volumes

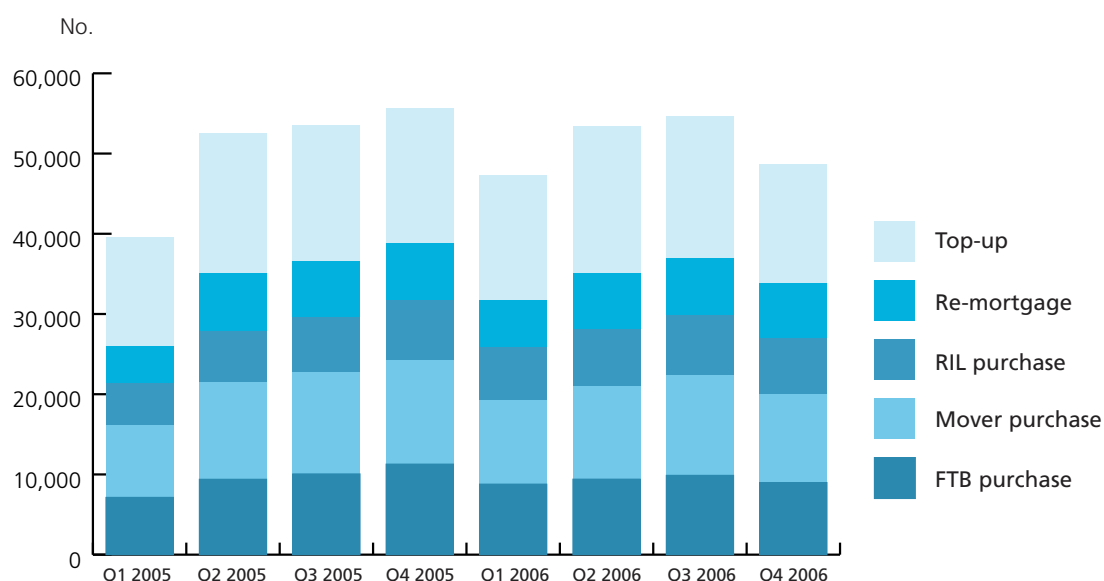
There were **48,637** mortgages issued in the final quarter of 2006 bringing the total number of loans for the year to **203,953**. This represented growth of **1.3%** in the number of loans issued in 2006 as against 2005.

- The relative stability in the distribution of lending volumes between market segments continued in the final quarter. However, switching activity (re-mortgage) increased as a proportion of overall lending to **14.2%** (in Q4 2006) of the market from **12.8%** in the previous quarter (Q3 2006).
- There were fewer loans issued in the final quarter of 2006 than in the previous period (Q3 2006) or the same period last year (Q4 2005).
- Top-up mortgages remain the largest market segment in terms of numbers of loans.

Quarter 4 2006: 48,637 Mortgage Loans



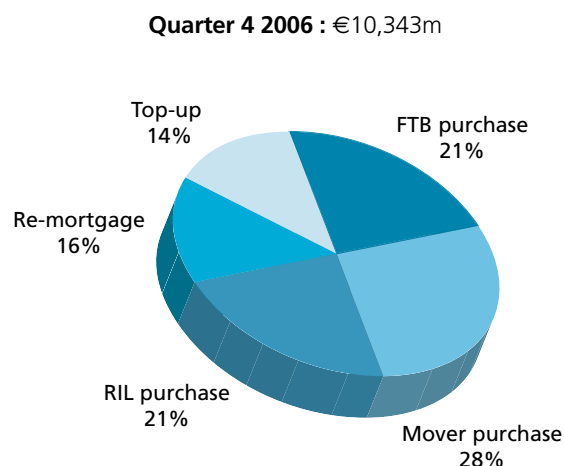
		FTB Purchase		Mover Purchase		RIL Purchase		Re-mortgage		Top-up		Total Drawdowns
		No.	%	No.	%	No.	%	No.	%	No.	%	No.
2006	Q4	8,984	18.5%	11,065	22.7%	6,881	14.1%	6,883	14.2%	14,824	30.5%	48,637
	Q3	9,884	18.1%	12,470	22.8%	7,530	13.8%	6,981	12.8%	17,758	32.5%	54,623
	Q2	9,407	17.6%	11,598	21.7%	7,083	13.3%	6,949	13.0%	18,412	34.4%	53,449
	Q1	8,789	18.6%	10,452	22.1%	6,647	14.1%	5,752	12.2%	15,604	33.0%	47,244
2005	Q4	11,284	20.3%	12,941	23.3%	7,474	13.4%	7,108	12.8%	16,811	30.2%	55,618
	Q3	10,062	18.8%	12,688	23.7%	6,842	12.8%	7,004	13.1%	16,947	31.7%	53,543
	Q2	9,394	17.9%	12,071	23.0%	6,368	12.1%	7,202	13.7%	17,469	33.3%	52,504
	Q1	7,139	18.0%	9,060	22.9%	5,172	13.1%	4,630	11.7%	13,594	34.3%	39,595



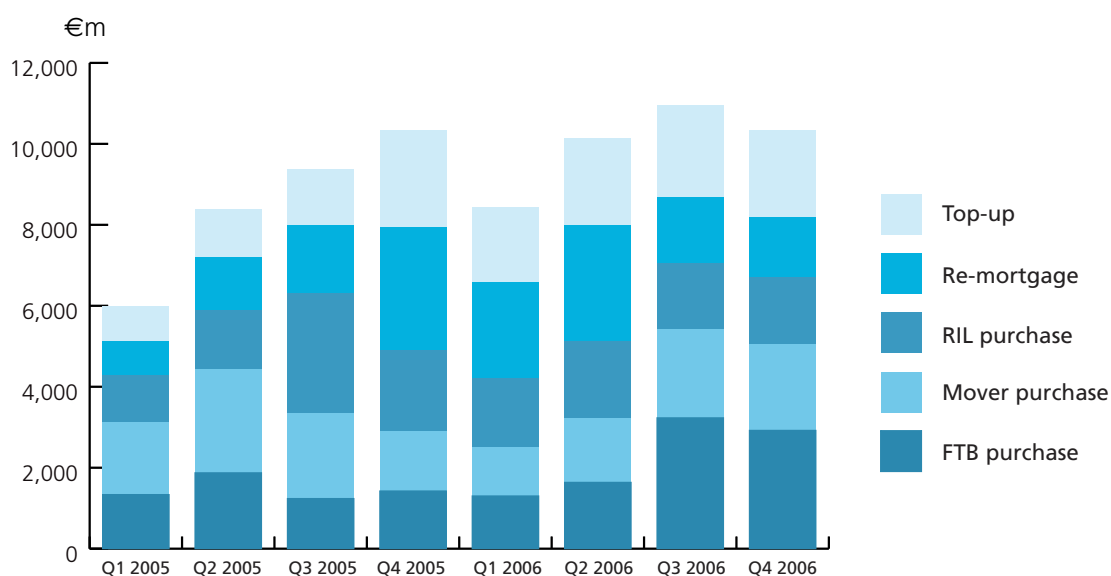
Loan Values

The value of switched mortgages (re-mortgage) grew to €1,679m in the final quarter of 2006. This represents the largest amount of lending in this segment to date and, at 16.2%, is the most this segment has represented in terms of its proportion of the overall market.

- The residential investment letting (7.2%), re-mortgage (13.4%) and top-up (2.5%) segments showed increases in the final quarter of 2006 against the same period in 2005.
- Only the re-mortgage category increased in value in Q4 2006 against Q3 with decreases in all other segments underlying the overall decrease of 5.6% in the value of lending in Q4 versus Q3.



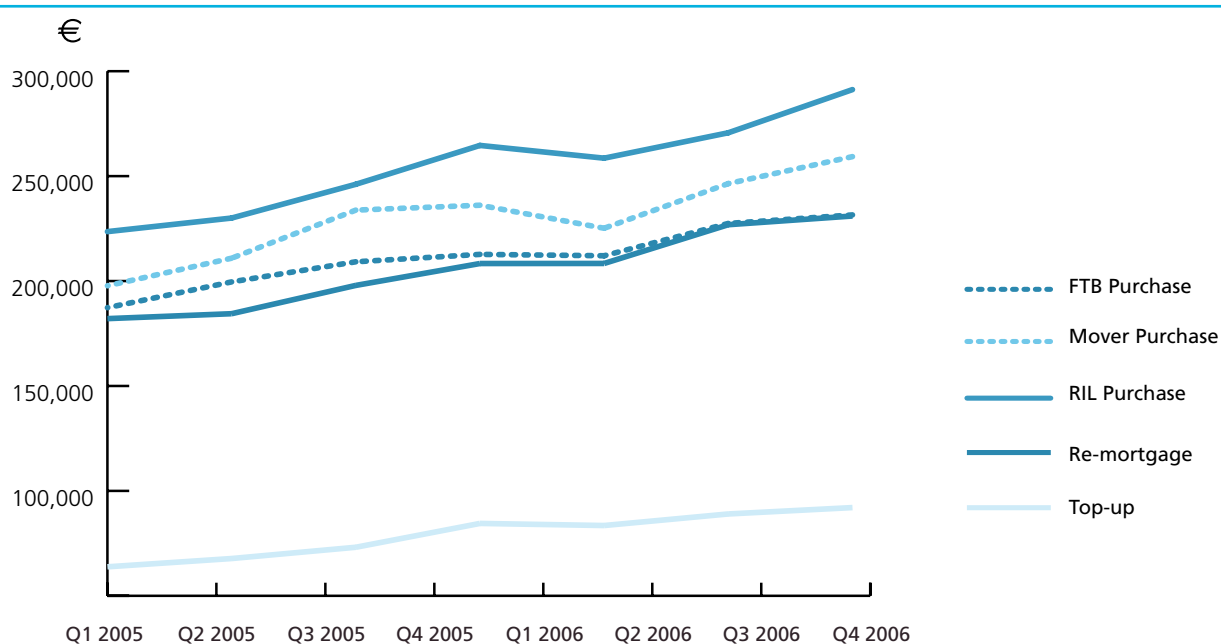
		FTB Purchase		Mover Purchase		RIL Purchase		Re-mortgage		Top-up		Total Drawdowns €m
		€m	%	€m	%	€m	%	€m	%	€m	%	
2006	Q4	2,157	20.9%	2,924	28.3%	2,121	20.5%	1,679	16.2%	1,462	14.1%	10,343
	Q3	2,288	20.9%	3,233	29.5%	2,193	20.0%	1,613	14.7%	1,635	14.9%	10,962
	Q2	2,140	21.1%	2,858	28.2%	1,917	18.9%	1,576	15.6%	1,639	16.2%	10,130
	Q1	1,863	22.1%	2,353	27.9%	1,719	20.4%	1,199	14.2%	1,303	15.4%	8,437
2005	Q4	2,400	23.2%	3,056	29.6%	1,978	19.1%	1,481	14.3%	1,426	13.8%	10,341
	Q3	2,105	22.4%	2,966	31.6%	1,684	17.9%	1,386	14.8%	1,239	13.2%	9,380
	Q2	1,875	22.3%	2,545	30.3%	1,465	17.4%	1,328	15.8%	1,184	14.1%	8,397
	Q1	1,337	22.3%	1,792	29.9%	1,156	19.3%	843	14.1%	868	14.5%	5,996



Average Loan

		FTB Purchase	Mover Purchase	RIL Purchase	Re-mortgage	Top-up
		€	€	€	€	€
2006	Q4	240,151	264,209	308,234	243,962	98,624
	Q3	231,514	259,286	291,230	230,991	92,050
	Q2	227,454	246,444	270,657	226,847	89,007
	Q1	212,053	225,158	258,549	208,382	83,498
2005	Q4	212,709	236,132	264,625	208,348	84,831
	Q3	209,174	233,794	246,102	197,917	73,137
	Q2	199,593	210,884	230,019	184,433	67,767
	Q1	187,309	197,756	223,554	182,089	63,820

- Average loan sizes continued to increase in all segments in the final quarter of 2006.
- Mortgages in respect of residential investment properties continued to be the highest average loan size, increasing to €308,234 in quarter 4.



Irish Banking Federation (IBF) is the leading representative body for banking and financial services in Ireland. Irish Mortgage Council (IMC) is an affiliate of IBF and represents mortgage lending institutions.

Data

This data relates to loans granted by IBF/IMC member institutions listed which are secured by a mortgage on residential Irish property. We estimate that the data covers well in excess of 95% of the mortgage market and includes residential mortgage lending data from the following institutions:

AIB group
 Bank of Ireland Mortgage Bank
 Bank of Scotland (Ireland)/Halifax
 EBS Building Society
 First Active
 ICS Building Society
 IIB Homeloans Ltd
 Irish Nationwide Building Society
 Permanent TSB
 Ulster Bank

Whilst every effort is made to ensure accurate classification of loans, some exceptions will always arise. The following are the market segment definitions in use in IMC data.

- First Time Buyer (FTB) Purchase - a loan issued for the purchase of residential property which is to be owner-occupied, where none of the borrowers have ever been an owner occupier (or part owner occupier) of a residential property in Ireland or elsewhere.
- Mover purchase - a loan issued for the purchase of residential property which is to be owner-occupied, where at least one of the borrowers has been an owner occupier (or part owner occupier) of a residential property in Ireland or elsewhere.
- Residential Investment Letting (RIL) purchase - a loan issued for the purchase of residential investment property or a holiday home
- Re-mortgage - a loan which is issued by one lender to refinance an existing mortgage with another lender. This may or may not include further equity release.
- Top-up - a further mortgage advance to an

existing borrower which is issued to finance expenditure other than house purchase.

Disclaimer:

This report is based on statistical information supplied to IBF/IMC by the mortgage lending institutions listed herein. PricewaterhouseCoopers has reviewed the collation of this report by IBF/IMC. While every effort has been made to ensure the accuracy of information included in this report, IBF and PricewaterhouseCoopers can accept no responsibility for errors contained herein. This report is not to be reproduced in whole or in part without prior permission.

The full data series will be maintained on the IBF website (www.ibf.ie).

Next publication: May 2007

Contacts:

Eimer O'Rourke, Irish Banking Federation
eimer.orourke@ibf.ie, (01) 474 8818

John Clinton, Irish Banking Federation
john.clinton@ibf.ie, (01) 474 8817